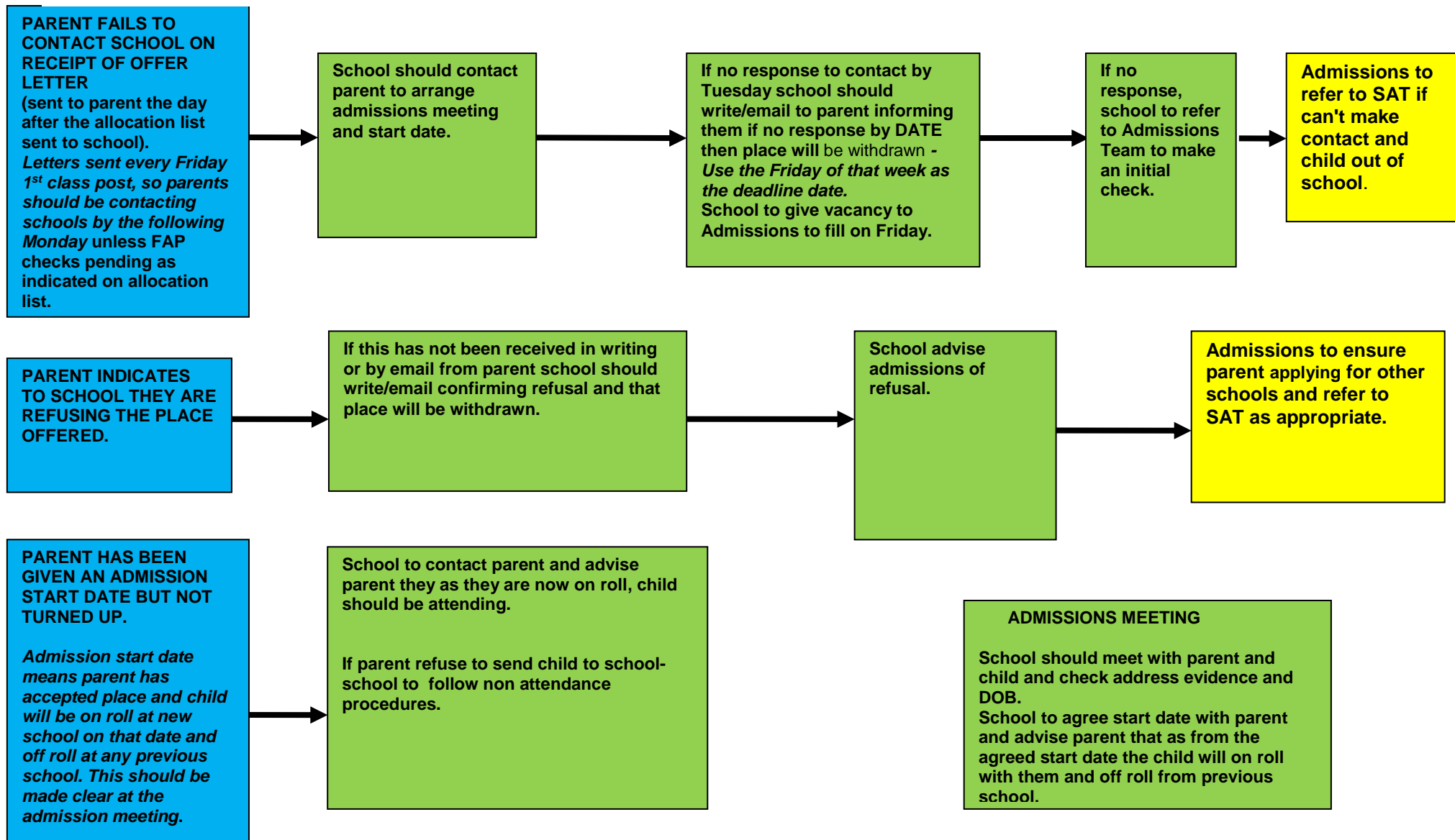


**IN YEAR APPLICATIONS - POST ALLOCATION PROCESS 1. (for children flagged as "LID" on allocation list which means "new to country" follow process 2).**



**If Admissions receive a refusal direct they will advise the school and carry out any necessary referrals to SAT.**

Please contact the Admissions Team at any stage for further advice.

If there are any other circumstances which could potentially hold up the admission of a child, please flag this up to the Admissions Schools contact Admissions on 02392 68 8150 or 8589 - do NOT give this number to parents- for school use only.

Parents contact Admissions on 023 92 68 8008.